



Berenice Steyn
079 402 2468
berenice@urbanindex.co.za

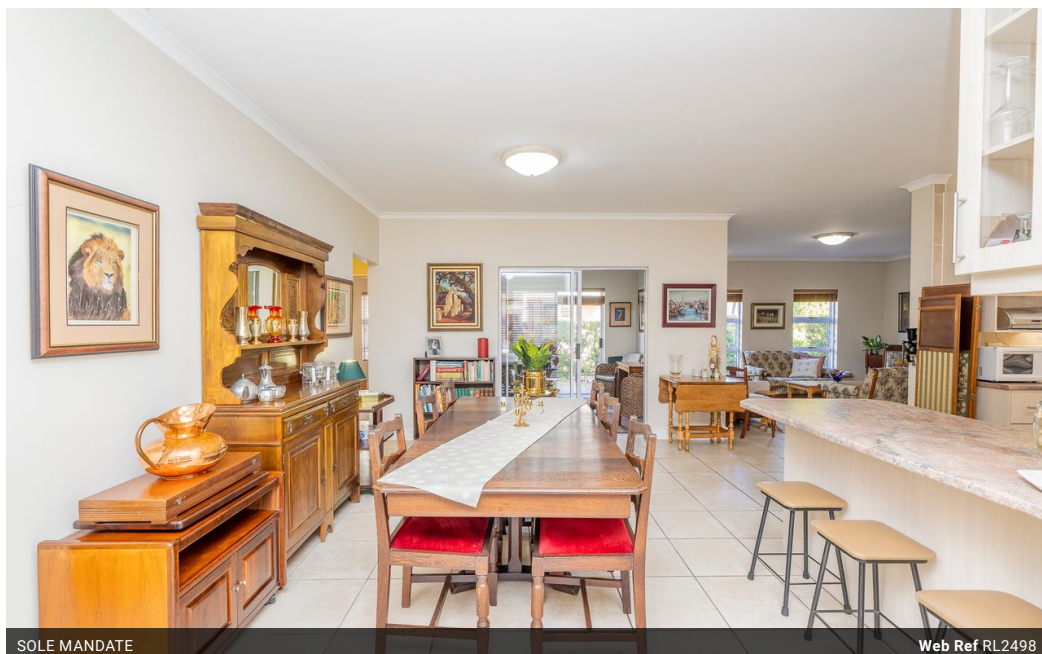


Fiona Beukes
082 287 5472
fiona@urbanindex.co.za

Contact Head Office

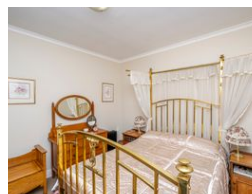
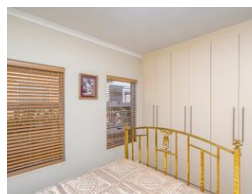
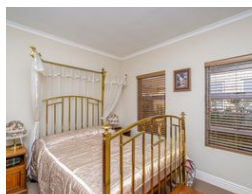
021 0075888

Regus Office
Willowbridge Centre
Carl Cronje Drive
Bellville
7530



SOLE MANDATE

Web Ref RL2498



R3,885,000

3 2 2

Monthly Bond Repayment R38,787.06

Calculated over 20 years at 10.5% with no deposit.

Transfer Costs R268,541.00 **Bond Costs** R51,610.00

These calculations are only a guide. Please ask your conveyancer for exact calculations.

Monthly Levy R1,700

Spacious 3-Bedroom Home in Secure Othello Retirement Estate

EXCLUSIVE SOLE MANDATE -

This well-maintained home offers 3 bedrooms and 2 bathrooms

- The main bedroom features a full en-suite bathroom (bath and shower) with heater lights and plenty of built-in cupboards.
- The second bedroom is fitted as a study with extra cupboards and a built-in desk — ideal for working from home.
- The third bedroom also includes additional cupboard space.
- This unit includes significantly more cupboard space than standard homes in the estate.

Kitchen & Scullery

- Well-appointed kitchen with ample cupboard space.
- Separate scullery with a back door leading to a paved backyard.
- Space for a washing machine, dishwasher, and tumble dryer.
- Outdoor basin with a hot water tap for added convenience.
- Fitted with a solar geyser for energy efficiency.

Living Areas

- Very spacious lounge and dining area...

Features

Pets Allowed Yes

Interior

Bedrooms	3
Bathrooms	2
Kitchens	1
Recep. Rooms	2
Furnished	No

Exterior

Garages	2
Carports / Parkings	4
Security	Yes
Pool	No
Views	False

Sizes

Floor Size	214m ²
Land Size	300m ²

Extras

Wheelchair Accessible Blinds Built In Braai