



**Ryan Sass**  
084 406 5816  
ryan@urbanindex.co.za

Contact Head Office

021 0075888

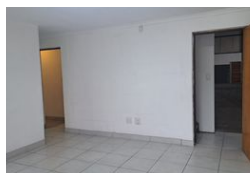
Regus Office  
Willowbridge Centre  
Carl Cronje Drive  
Bellville  
7530

## 350m<sup>2</sup> Industrial Yard To Let in Stikland Industrial

NEW



Web Ref CL100



**R29,750 pm**

**Gross Monthly Rental** R29,750 Excl. VAT

0 0

## 350m<sup>2</sup> Industrial Yard To Let in Stikland Industrial

Discover this spacious 350m<sup>2</sup> industrial unit available for lease in the prime Stikland Industrial Park, Bellville. Perfectly suited for light manufacturing, storage, or distribution operations, this warehouse features high roof clearance and a large roller shutter door to facilitate effortless loading and unloading. The unit benefits from abundant natural light, creating a bright and productive environment, complemented by 63 amps of three-phase power to support various equipment needs. The well-designed office space includes a reception area, meeting room, private offices, air conditioning, a kitchenette, and staff ablutions, ensuring a comfortable and functional workspace for your team. Secure on-site parking further enhances convenience and safety for staff and visitors alike.

### Features

**Zoning** Industrial

#### Sizes

Floor Size	350m <sup>2</sup>
Land Size	2,010m <sup>2</sup>