



Ryan Sass
084 406 5816
ryan@urbanindex.co.za

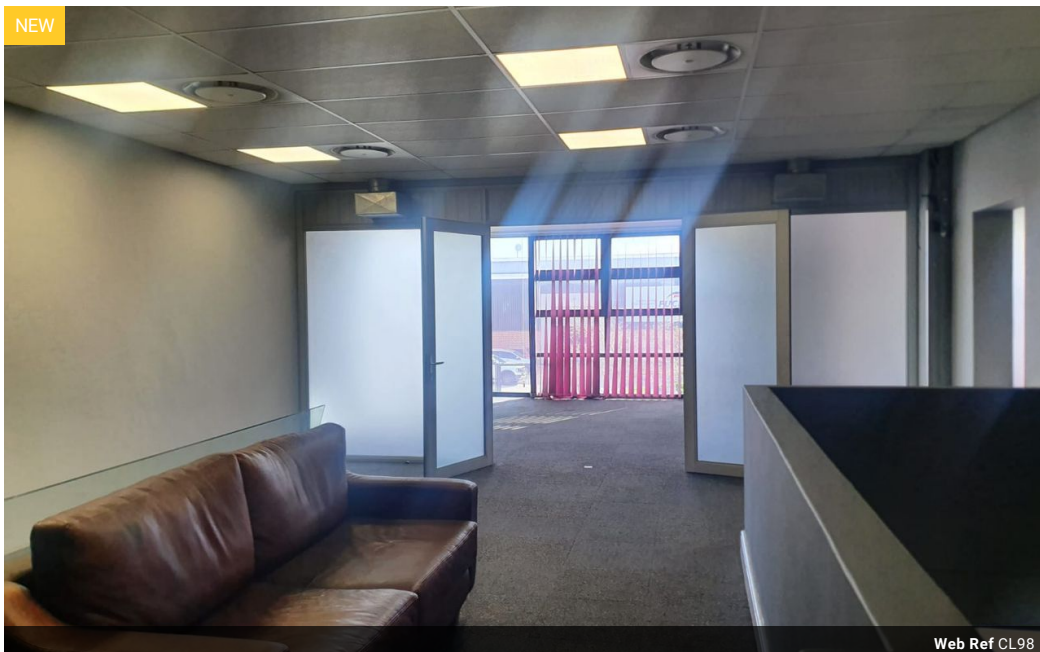
Contact Head Office

021 0075888

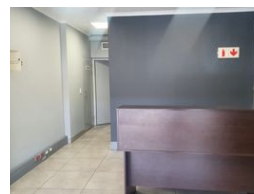
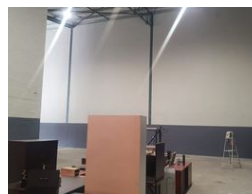
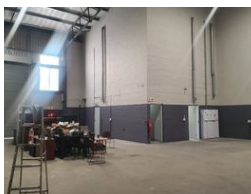
Regus Office
Willowbridge Centre
Carl Cronje Drive
Bellville
7530

350m² Industrial Yard To Let in Stikland Industrial

NEW



Web Ref CL98



R35,910 pm

Gross Monthly Rental R35,910 Excl. VAT



0



0

350m² Industrial Yard To Let in Stikland Industrial

This prime industrial unit to let in Brackenfell offers 342m² of modern, functional space within Watershed Park, an iconic development strategically positioned alongside the R300 with excellent exposure and accessibility. The warehouse features a double-volume design with an eaves height of 7.4 meters, making it ideal for heavy loading operations. It is equipped with a container-high roller shutter door at 5 meters, industrial-grade flooring, and a three-phase 60-amp prepaid power supply, ensuring robust operational capacity. The property also includes a well-appointed A-grade office with contemporary finishes, air conditioning, a reception area, and essential amenities such as a paraplegic toilet and a kitchenette, providing a comfortable environment for staff and visitors.

Features

Zoning Industrial

Sizes

Floor Size	350m ²
Land Size	2,010m ²