



Ryan Sass
084 406 5816
ryan@urbanindex.co.za

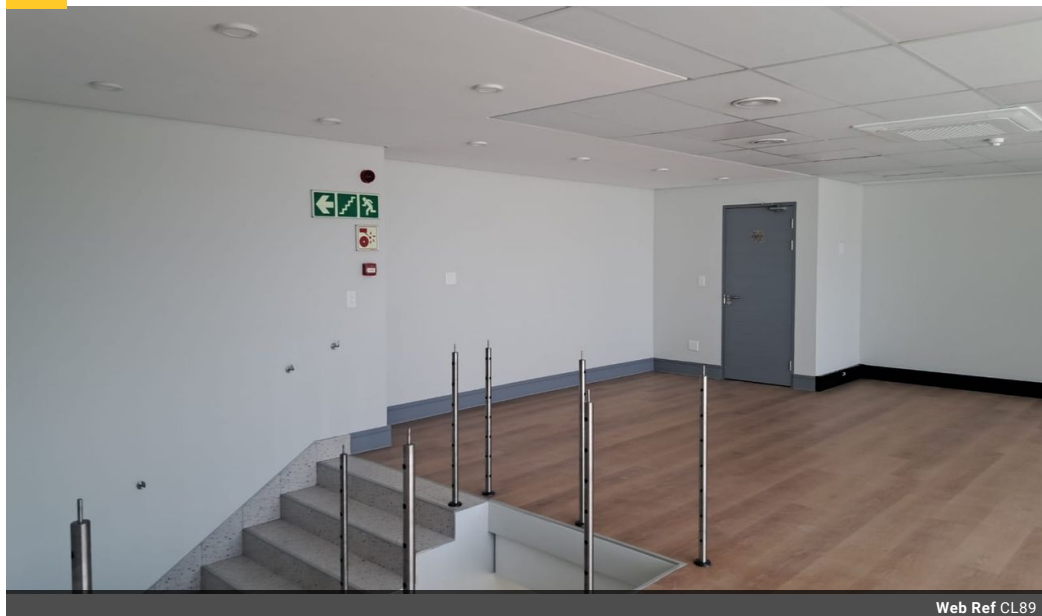
Contact Head Office

021 0075888

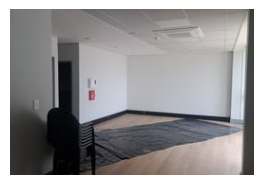
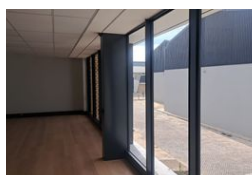
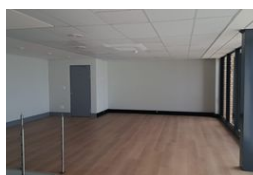
Regus Office
Willowbridge Centre
Carl Cronje Drive
Bellville
7530

428m² Industrial Yard To Let in Stikland Industrial

NEW



Web Ref CL89



R47,080 pm

Gross Monthly Rental R47,080 Excl. VAT

 0  0

428m² Industrial Yard To Let in Stikland Industrial

Unlock the potential of your business with this exceptional 428m² A-Grade industrial space located in the highly sought-after Rivers Edge Business Park in Stikland. Designed for efficiency and versatility, this modern warehouse features three-phase power, generous ceiling height for racking and storage, and an open-plan layout that accommodates various operational needs. The professional frontage and high-quality finishes make a strong first impression, while the spacious interior provides the flexibility to adapt to light manufacturing, warehousing, or distribution activities. Situated within a secure environment that includes 24-hour security and access control, tenants can operate with peace of mind, knowing their assets are well protected.

Features

Zoning Industrial

Sizes

Floor Size 428m²
Land Size 3,000m²