



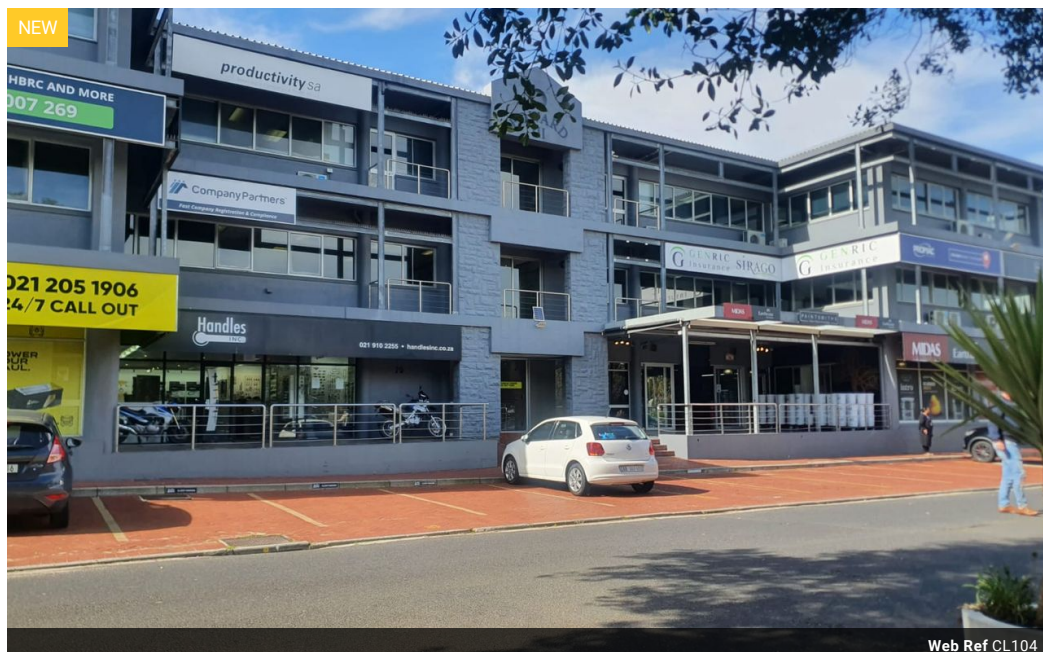
Ryan Sass
084 406 5816
ryan@urbanindex.co.za

Contact Head Office

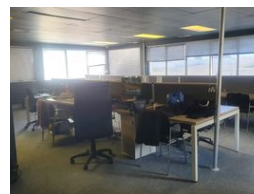
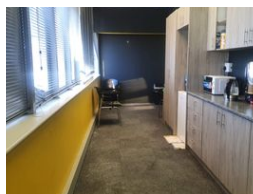
021 0075888

Regus Office
Willowbridge Centre
Carl Cronje Drive
Bellville
7530

110m² Office To Let in Bo Oakdale



Web Ref CL104



R13,602 pm

Gross Monthly Rental R13,602 Excl. VAT

0 0

110m² Office To Let in Bo Oakdale

Discover a professional and accessible office space in Bellville's Edward III complex, ideally situated in Tyger Valley with excellent visibility from Willie Van Schoor Drive. This second-floor unit, Office 203, spans 110m² and offers a comfortable, functional environment for your business needs. The space is available from 1 September 2025 at a competitive rate of R123.65 per square meter (excluding VAT), translating to a monthly rent of R13,602 (excluding VAT). The unit includes one shaded parking bay and benefits from 24-hour security, ensuring a safe and secure working environment. With easy access to the N1 highway, both north and southbound, and municipal parking with a 120-minute limit, commuting and client visits are straightforward.

Features

Zoning Commercial

Sizes

Floor Size 110m²
Land Size 2,435m²